

New Student Orientation



Nantucket Elementary School

August 19, 2021

#WEAREBETTERTOGETHER
Embracing and Celebrating Diversity



Visit the PTA website
WWW.NANTUCKETPTA.COM

PTA President: Robyn Cohen

**WE ARE VERY PROUD OF PARENT INVOLVEMENT
AND VALUE COLLABORATION!!**

Important Dates

September 2	<i>Sneak A Peek</i>	2:00
-------------	---------------------	------

September 8	<i>First Day of School (1-5)</i>	8:50
-------------	----------------------------------	------

September 8 & 9	<i>Kindergarten Conferences</i>	
-----------------	---------------------------------	--

September 10,13,14	<i>Staggered Kindergarten Entrance</i>	
--------------------	--	--

September 21	<i>Back to School Night</i>	6:30
--------------	-----------------------------	------

September 29	<i>PTA Meeting</i>	6:30
--------------	--------------------	------

First Day

What to Expect...

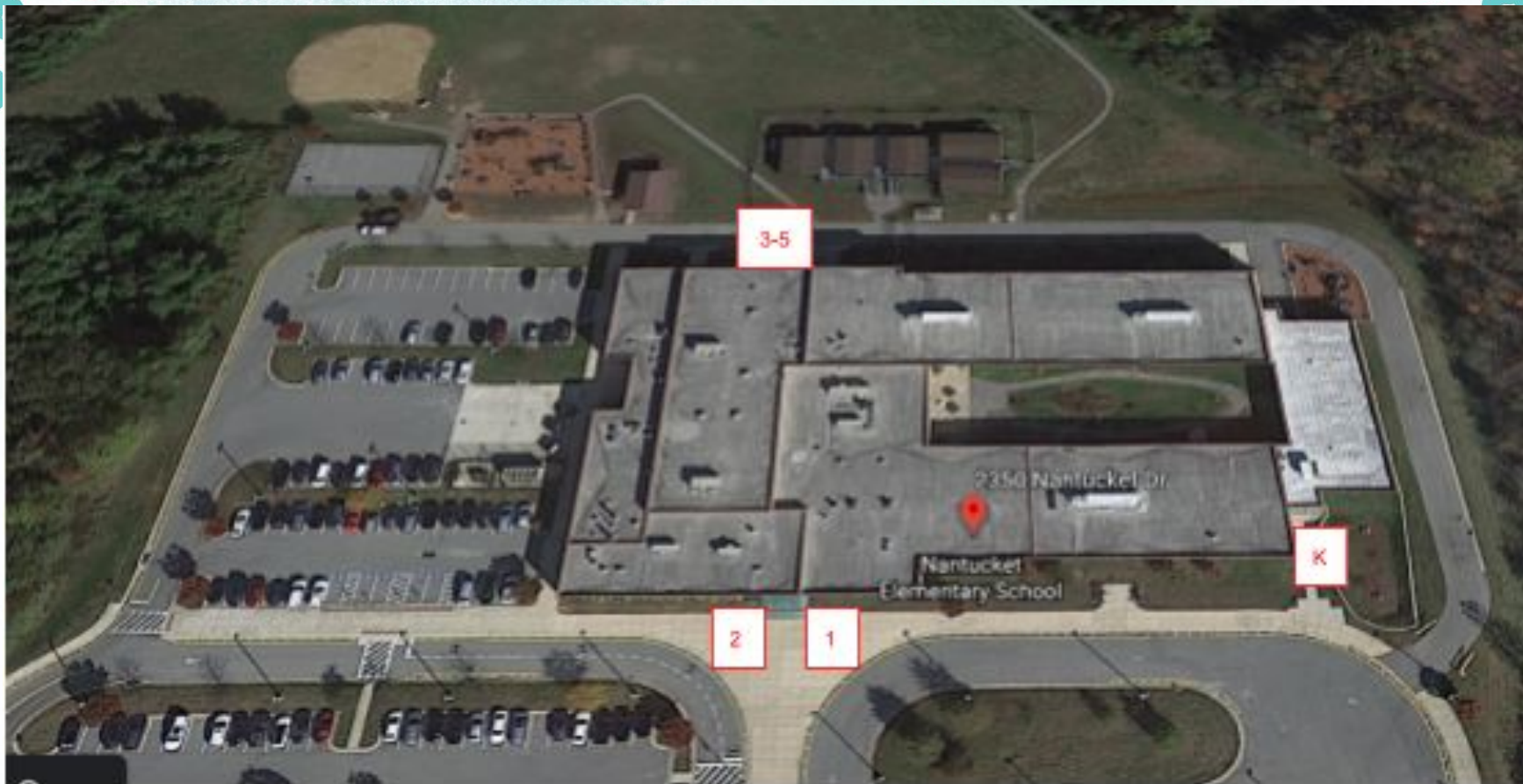
Items to bring

- ★ Mask
- ★ Water Bottle
- ★ Backpack
- ★ Earphones

Arrival

- Grades 1 & 2 (FRONT DOOR)
- Grades 3 -5 (BACK PLAYGROUND)

Parents will not be permitted to walk students to class



Daily Schedule



8:50

Students Enter Building

9:05

Instruction Begins

3:30

Student Dismissal

*** There will be no adult supervision before 8:50***

Lunch



**Lunch will be provided
FREE, for ALL students**

Families that could possibly
qualify for meal benefits, still
need to complete the Free
and Reduced Meal application
form.



Step 1



School
Meals



Student/Parent
Portal



Vendors &
Contractors



School
Security



Safety
Hotline



News
Releases



School
Year 2021-
22

ELEVATING ALL STUDENTS...ELIMINATING ALL GAPS



STUDENTS

ACADEMICS

SERVICES

SCHOOLS

FAMILIES

BOARD

STAFF

PARTNERS

ABOUT US



About Food and Nutrition Services @ AACPS

Contact Us



Food & Nutrition Services

Search ...



[Home](#)

[Nutrition Information](#)

Step 2

[Apply for Free or Reduced Price Meals](#)

[Programs](#)

[Wellness](#)

Lunch

- ★ Students will have assigned seating by homeroom classrooms.
- ★ Masks may be removed while students are actively eating from their seat.
- ★ Masks must be worn anytime a student moves from their seat or finishes their meal
- ★ We will space out students to the best of our ability in order to maximize distancing.



Lunch Schedule

Grade 2

10:35 - 11:00

Grade 3

11:05 - 11:30

Grade 1

11:35 - 12:00

Kindergarten

12:05 - 12:30

Grade 4

12:45 - 1:10

Grade 5

1:15 - 1:40



Recess



- ★ Students may remove masks during recess while maintaining a safe distance from others
- ★ Each classroom will have a designated recess location and rotate throughout the week.

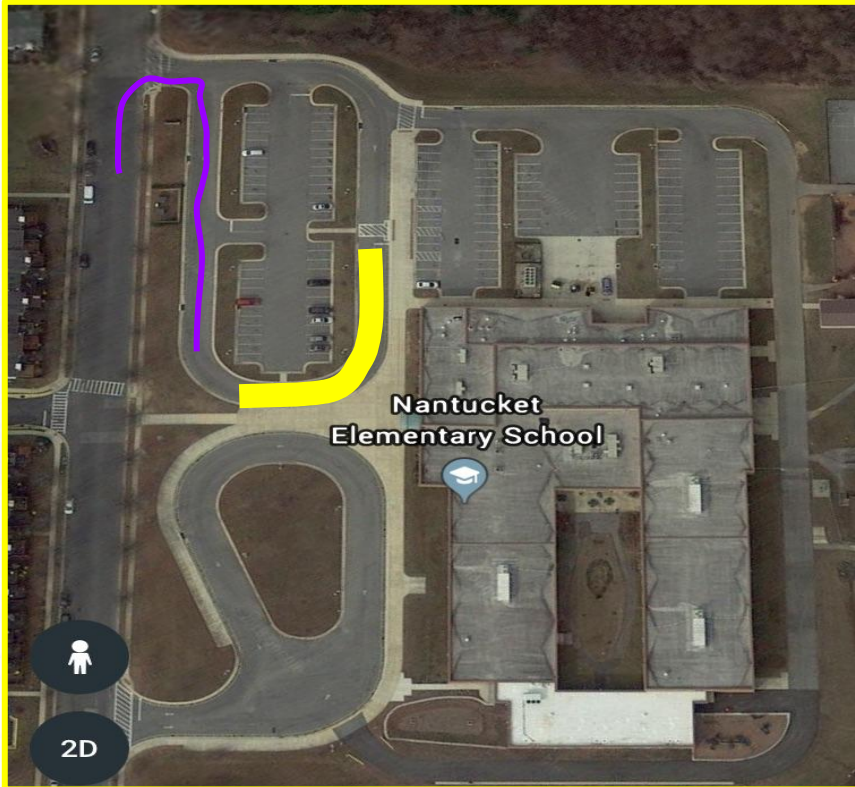
ARRIVALS



- ★ Dress for the weather
- ★ Parents/guests may not enter during arrival
- ★ We encourage social distancing while waiting for doors to open at 8:50 AM.
- ★ Car lane in the front of the building
- ★ Bus lane in front of the building
- ★ Walkers and Drivers should follow directions of the cross guard and staff members

Students must be in class by 9:05 AM

Arrival





Do not wait in car along Nantucket Drive for Bus Lane to open (in red area). Proceed to Car Rider line (blue area).

Dismissal

Order Dismissed

- Buses & Licensed
Childcare Vans Riders
Car Riders
Walkers
SACC

We ask that any **changes to your child's standard dismissal plan** be communicated to the School Office or Student's Teacher **prior to 3:20 p.m.**

Parents and Guest are not permitted beyond the office. We ask that parents remain back from the building to provide students with safe access and clear lines of vision upon exiting the building.



Car Riders

- ★ Display Car Rider tag on visor, dashboard, or hanging from your rearview mirror
- ★ Follow the direction of crossing guard and school staff
- ★ Pull into Car Rider lane and remain in your car with your car running
- ★ Please DO NOT pass cars in the Car Rider lane unless directed by staff member
- ★ As the staff member sees your tag, they will radio another staff member to send your student to your car.
- ★ Students will independently walk to vehicle and independently enter vehicle.
- ★ Follow the direction of the staff member on duty to exit.







Front/Back Door Walkers

- ★ Students may walk, ride a bike, or meet a parent to get into a parked car.
- ★ It is best, if you are meeting a student, to plan a location prior to the start of school where you will meet your child.
- ★ Students meeting adults who have parked a car in the parking lot must be accompanied by an adult to cross crosswalks and through the parking lot for the safety of the child.
- ★ Follow the direction of staff and crossing guards.



Attendance



To report an absence directly to the school, please fill out an Attendance Note form located on our school website

We monitor attendance and tardiness regularly and strive to maintain ongoing communication with parents.

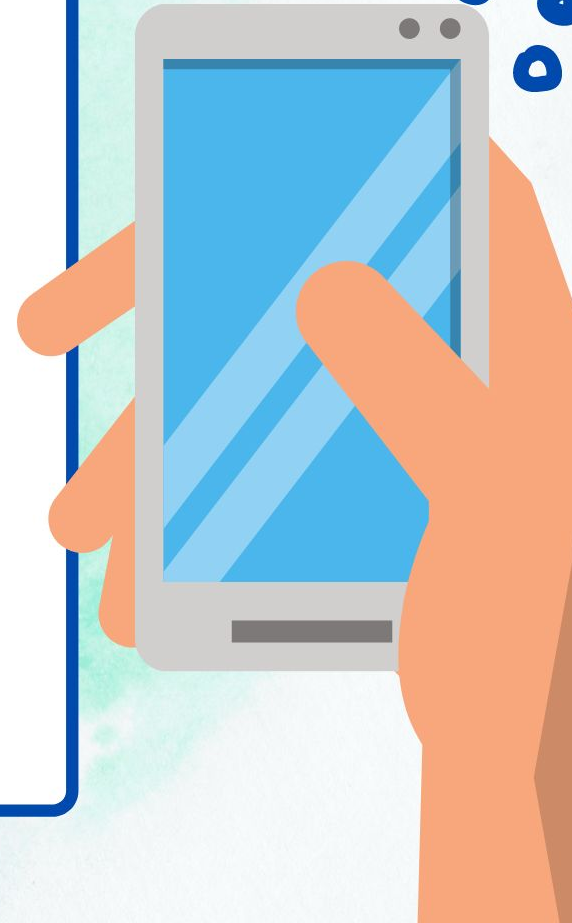
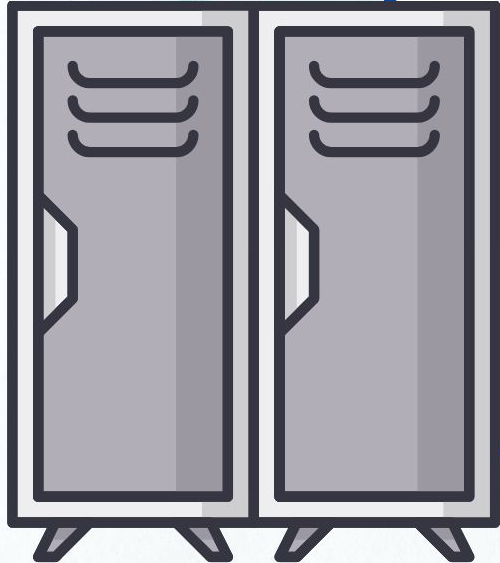
Lawful Absence

Students enrolled in public schools are considered lawfully absent from school for any portion of the day, only under the following conditions:

- Death of a Family Member
- Illness of the Student
- Court appearance
- Hazardous Weather Conditions
- Work Approved or School Sponsored Activities
- Observance of a Religious Holiday
- State of Emergency
- Suspension from School
- Other Emergencies
- Deployment Related Absences

Student Cell Phone Policy

Off & Away





Health Room



Lauren Soper, R.N.

To discuss specific concerns, please call
(410)451-6135 .

School Counselors

Amanda Newswanger
anewswanger@aacps.org
Grades K -2

Gabrielle Conley
gsconley@aacps.org
Grades 3 -5